

PODEŠAVANJE PRISTUPA E-MAIL
SERVERU "AFRODITA" POMOĆU
PROGRAMA MICROSOFT OUTLOOK
2003



PRISTUP
AFRODITI IZ
MS OUTLOOK-
a 2003

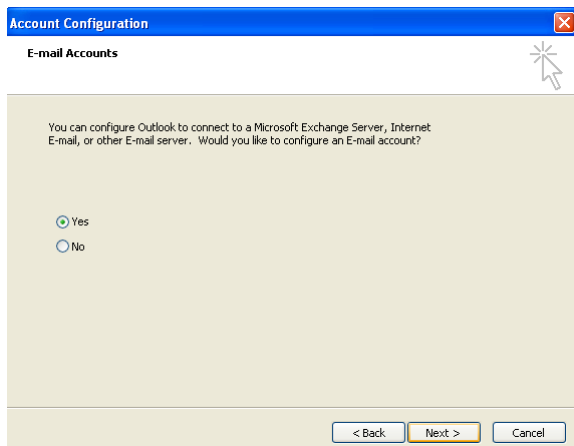
Ovo je kratko uputstvo za podešavanje pristupa na server afrodita.rcub.bg.ac.rs iz Microsoft Outlooka 2003:

1. Ukoliko je ovo prvi E-mail account u ovom programu:

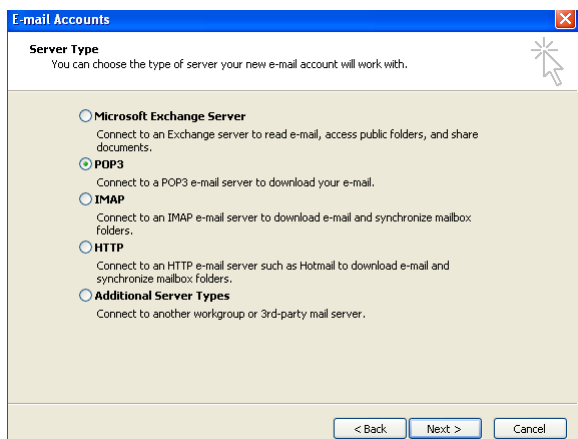
Pokrenete program i zatim kliknete na **Next**



Zatim opet **Next**



Izabraćete opciju **POP3** pristup serveru



Popunite formular kao na donjoj slici (naravno sa svojim licnim podacima)
...a zatim cete kliknuti na taster **More Settings...**

Internet E-mail Settings (POP3)
Each of these settings are required to get your e-mail account working.

User Information
Your Name: Marko Markovic
E-mail Address: marko@afrodita.rcub.bg.ac

Server Information
Incoming mail server (POP3): afrodita.rcub.bg.ac.rs
Outgoing mail server (SMTP): afrodita.rcub.bg.ac.rs

Logon Information
User Name: marko
Password: *****
 Remember password
 Log on using Secure Password Authentication (SPA)

Test Settings
After filling out the information on this screen, we recommend you test your account by clicking the button below. (Requires network connection)
Test Account Settings ...

More Settings ...

< Back Next > Cancel

Zatim idete na **Outgoing Server** i oznacite kao na donjoj slici

Internet E-mail Settings

General **Outgoing Server** Connection Advanced

My outgoing server (SMTP) requires authentication

Use same settings as my incoming mail server
 Log on using

User Name: _____
Password: _____
 Remember password

Log on using Secure Password Authentication (SPA)
 Log on to incoming mail server before sending mail

OK Cancel

Kliknućete na **Advanced** i upišite i označite kao na donjoj slici a zatim kliknite na taster **OK**

Internet E-mail Settings

General Outgoing Server Connection **Advanced**

Server Port Numbers
Incoming server (POP3): 995 Use Defaults
 This server requires an encrypted connection (SSL)
Outgoing server (SMTP): 587
 This server requires an encrypted connection (SSL)

Server Timeouts
Short Long 1 minute

Delivery
 Leave a copy of messages on the server
 Remove from server after 10 days
 Remove from server when deleted from Deleted Items

OK Cancel

Posle popunjenog formulara kliknućete na opciju **Next**

Internet E-mail Settings (POP3)
Each of these settings are required to get your e-mail account working.

User Information
Your Name: Marko Markovic
E-mail Address: marko@afrodita.rcub.bg.ac

Server Information
Incoming mail server (POP3): afrodita.rcub.bg.ac.rs
Outgoing mail server (SMTP): afrodita.rcub.bg.ac.rs

Logon Information
User Name: marko
Password: *****
 Remember password
 Log on using Secure Password Authentication (SPA)

Test Settings
After filling out the information on this screen, we recommend you test your account by clicking the button below. (Requires network connection)
Test Account Settings ...
More Settings ...

< Back **Next >** Cancel

I na sledećem ekranu završićete prilagođavanje klikom na taster **Finish**

E-mail Accounts

Congratulations!

You have successfully entered all the information required to setup your account.

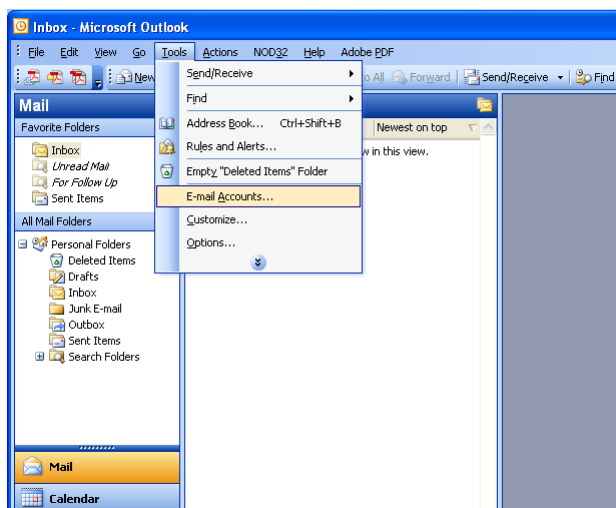
To close the wizard, click Finish.

< Back **Finish**

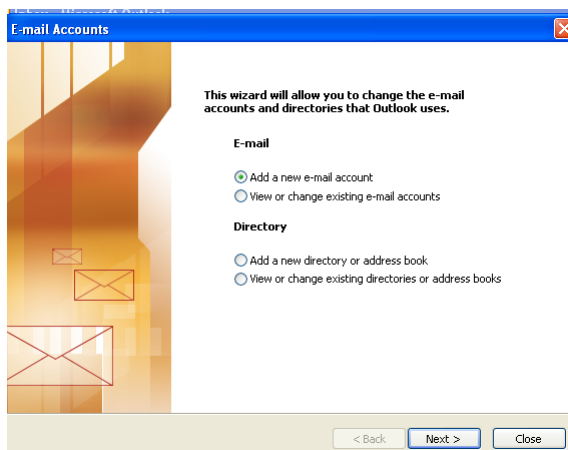
Vaš afrodita.rcub.bg.ac.rs „account“ je spreman za primanje i slanje pošte.

2. Ukoliko već imate E-mail account u Microsoft Outlooku:

Otvorite program i kliknite na **Tools** a zatim **E-mail Accounts...**



U donjem prozoru označite **Add a new e-mail account** i **Next**



A posle toga je kompletan dalji postupak identičan kao na primeru 1 (odnosno kao za prvi E-mail account u programu)