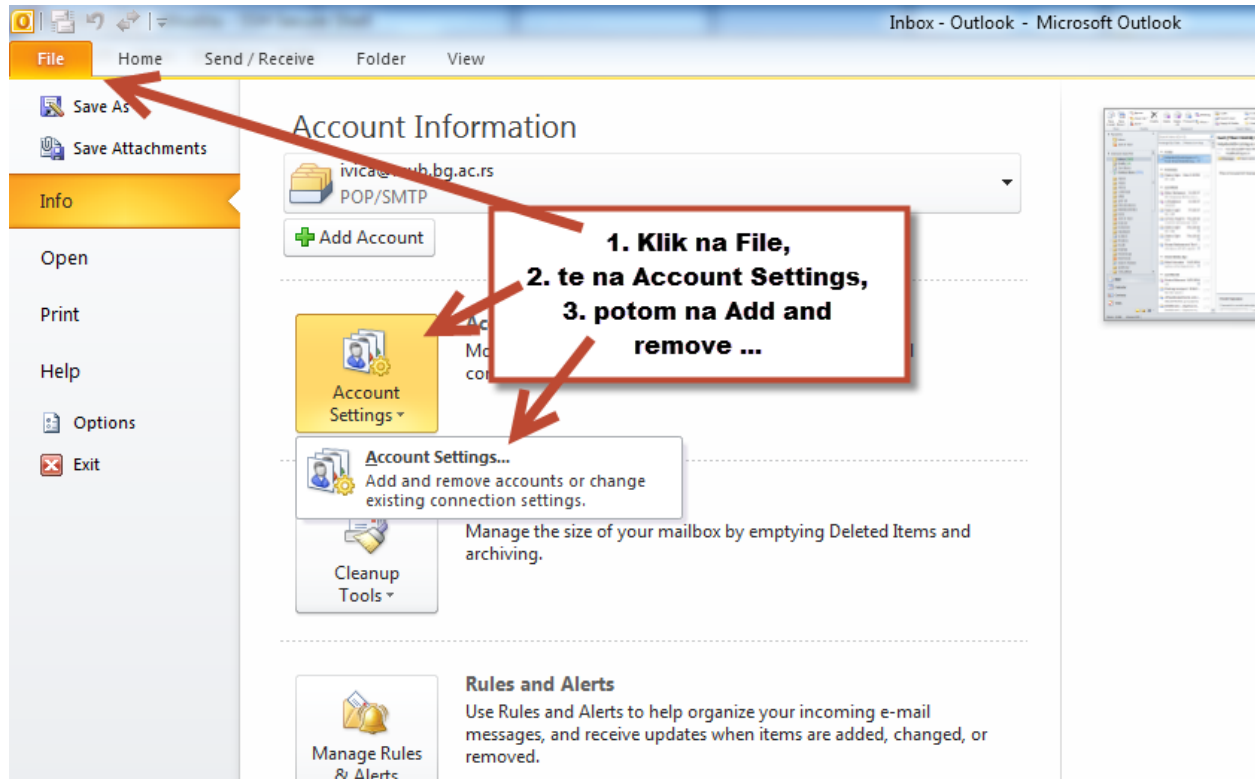


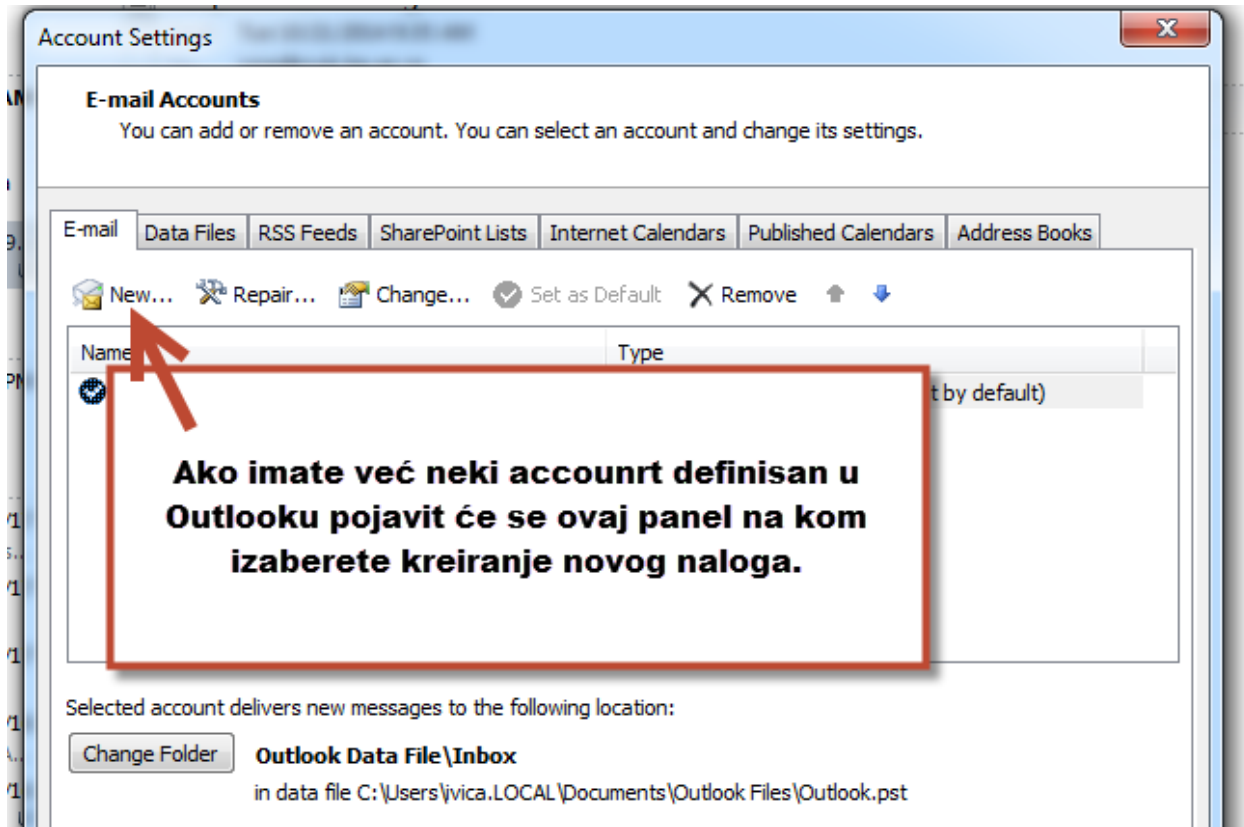
PODEŠAVANJE PRISTUPA NA SERVER
AFRODITA IZ MICROSOFT OUTLOOK-A
2010

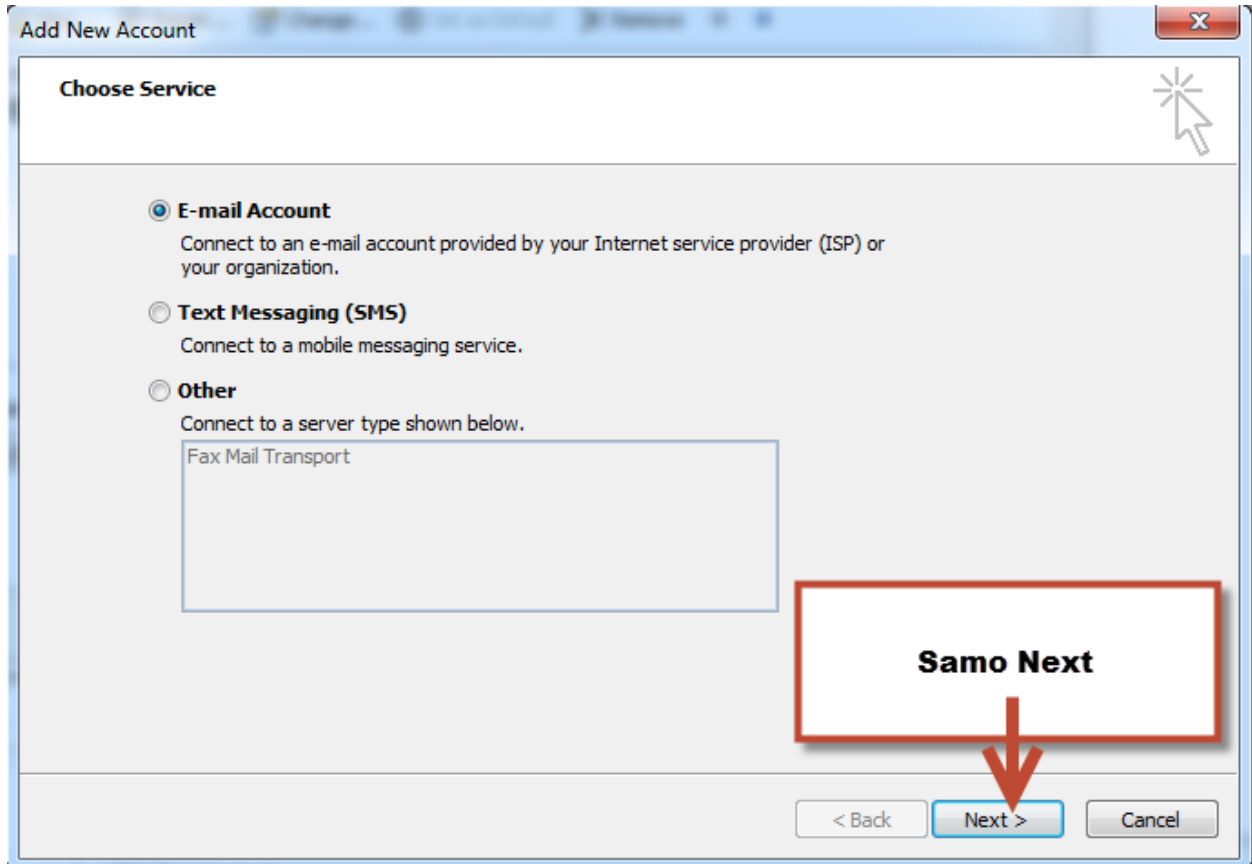


*AFRODITA iz MS
OUTLOOK MS 2010*

Napomena: Uputstvo je pravljeno na Microsoft Outlooku na kom već postoje Accounti (dodavanje), tako da ako kreirate svoj prvi Account na vašem Microsoft Outlooku, početak se može razlikovati od datog primera:



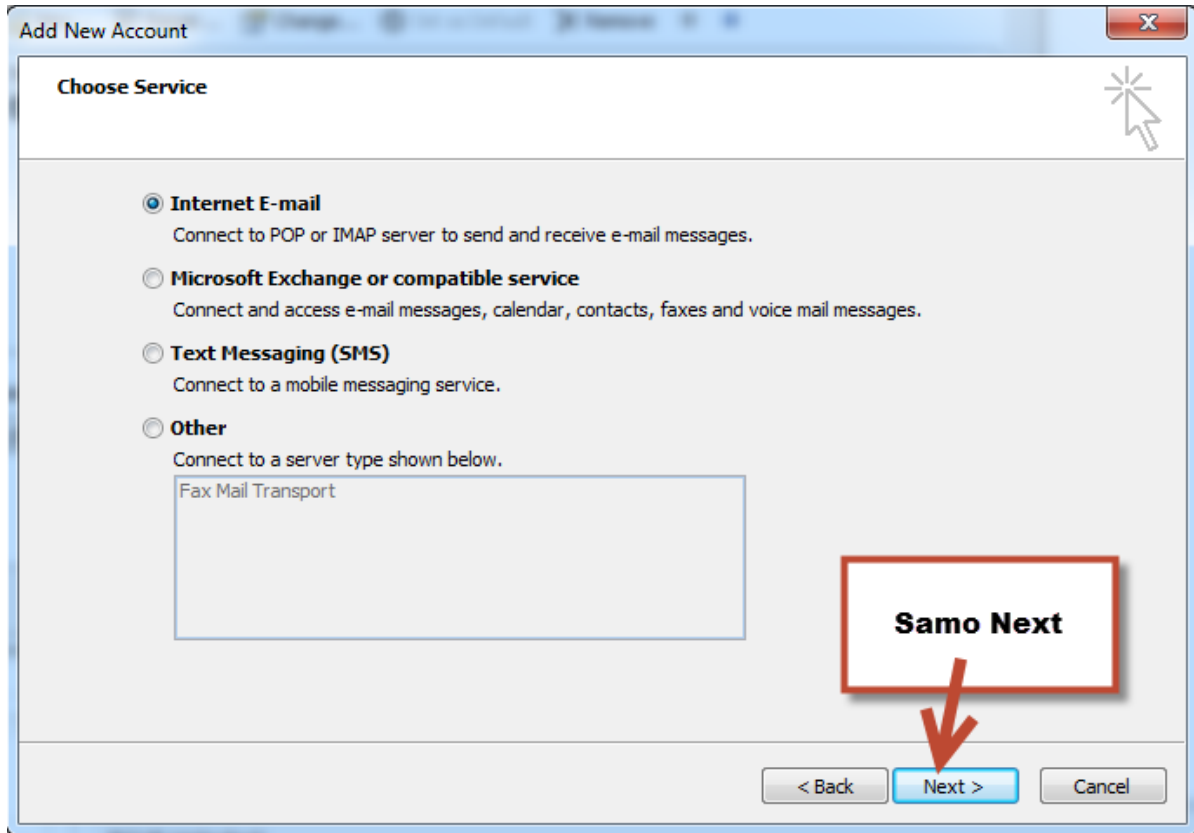




The screenshot shows a Windows-style dialog box titled "Add New Account". The main heading is "Auto Account Setup" with the subtitle "Connect to other server types." Below this, there are three radio button options: "E-mail Account", "Text Messaging (SMS)", and "Manually configure server settings or additional server types". The "E-mail Account" option is selected. It includes input fields for "Your Name:" (with example "Ellen Adams"), "E-mail Address:" (with example "ellen@contoso.com"), "Password:", and "Retype Password:". At the bottom, there are three buttons: "< Back", "Next >", and "Cancel".

Annotations on the screenshot include:

- A red box containing the text "Izaberete 'Manually config..'" with an arrow pointing to the "Manually configure server settings or additional server types" radio button.
- A red box containing the text "Potom Next" with an arrow pointing to the "Next >" button.



Unasete vaše podatke u tabelu, Incoming i Outgoing unesite kako pise u ovom primeru, Account Type isto.

Internet E-mail Set
Each of these set

User Information

Your Name:

E-mail Address:

Server Information

Account Type:

Incoming mail server:

Outgoing mail server (SMTP):

Logon Information

User Name:

Password:

Remember password

Require logon using Secure Password Authentication (SPA)

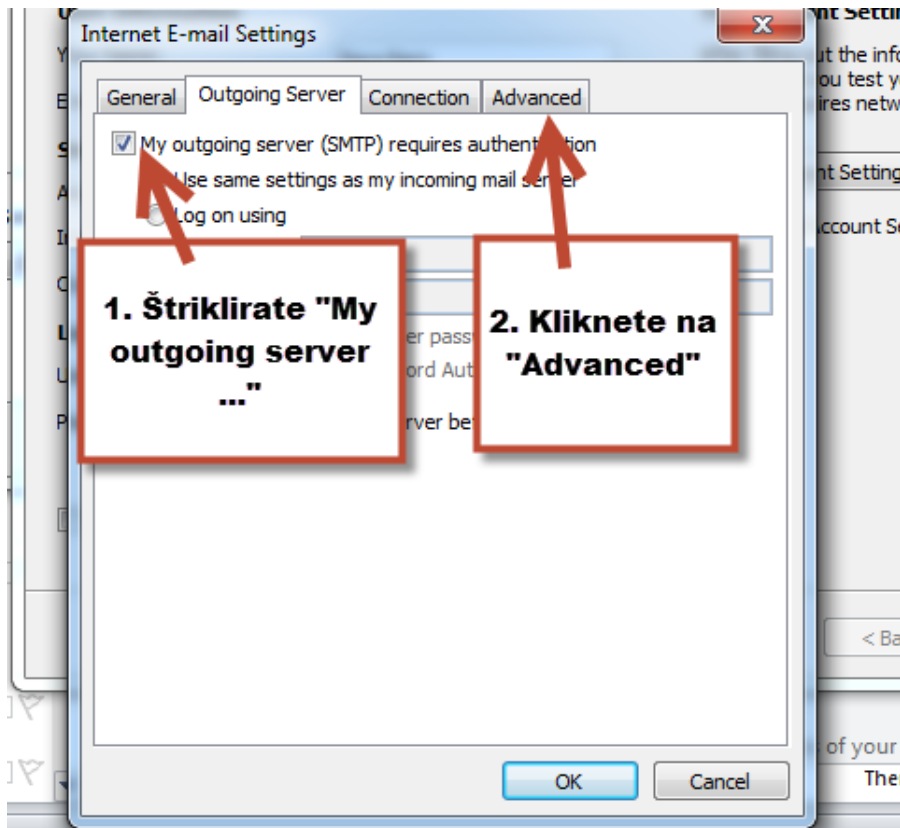
Test Account Settings

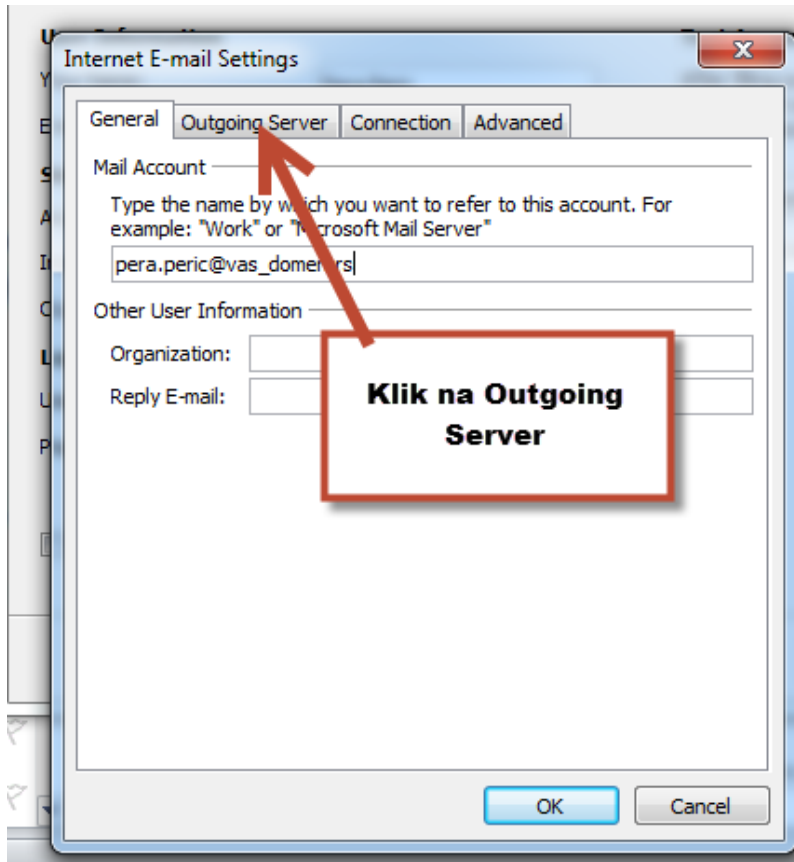
After filling out the information on this screen, we recommend you test your account by clicking the button below. (Requires network connection)

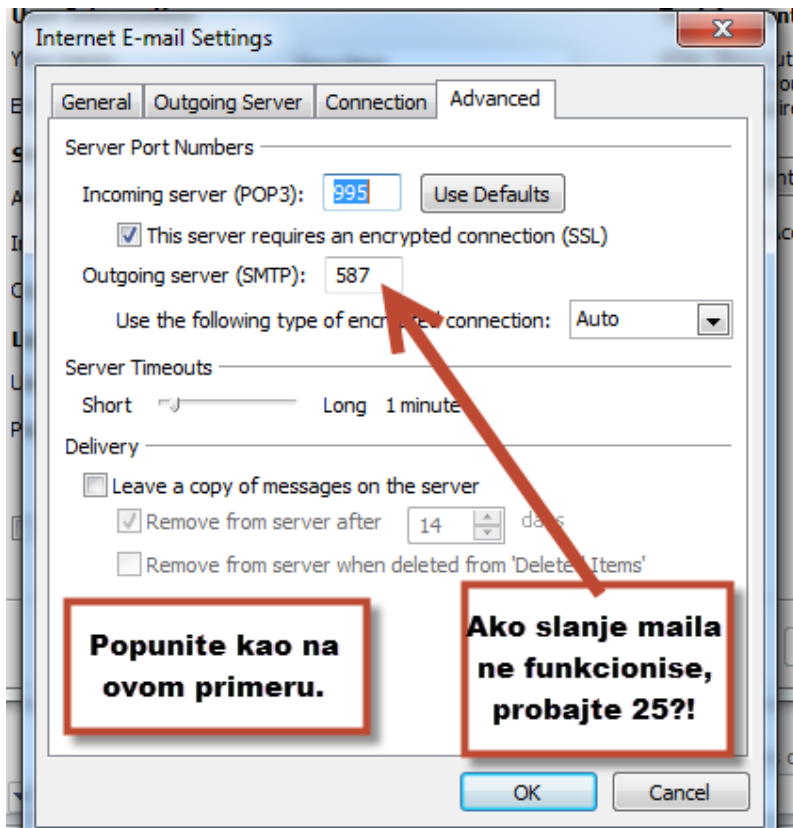
Test Account Settings by clicking the Next button

Skinite ovu striklu

Klik na More settings...







Nakon unošenja svih podataka kliknite na OK do kraja. Da biste slali mail-ove preko ovog Accounta potrebno je da kad kliknete na "New E-mail" proverite da li vam je ova e-mail adresa upisana u "From" (ukoliko nije izaberite je iz padajućeg menija). Napomena: uz parametar na poslednjoj slici "Outgoing server (SMTP)"- pojedini internet provajderi blokiraju podrazumevajući port za slanje pošte (port 25 koji stoji u osnovnoj konfiguraciji), zato je potrebno da se tu unese port 587, postoji mogućnost (vrlo mala) da provajder baš obrnuto nema otvoren port 587, te mail neće da ode (ostaje u Outbox-u), u tom slučaju možete probati sa portom 25.